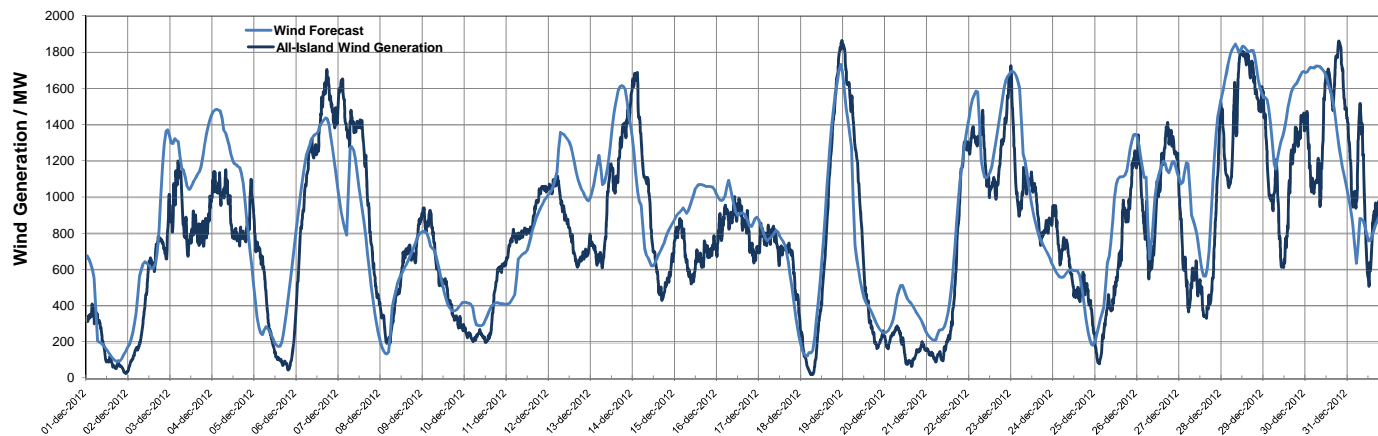


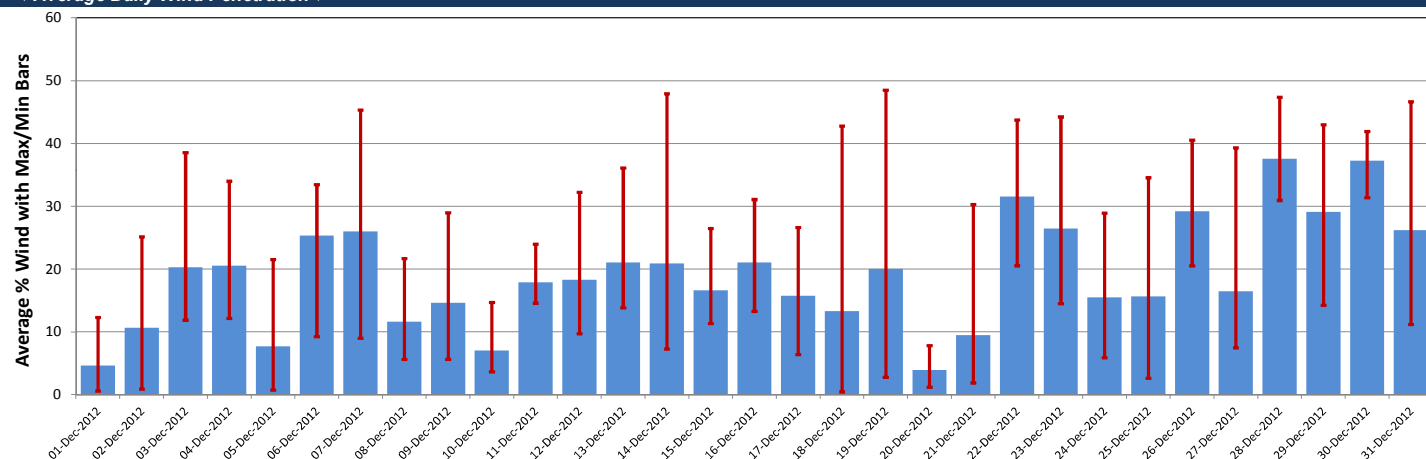
## ▼ System Data ▼

TSO	Installed Wind Capacity (MW)	Wind (MW)			Wind GWhrs	Monthly Wind Capacity Factor %	Demand* (MW)			Total GWhrs	Wind Penetration %			SNSP Max	Avg Abs Forecast Error
		Max	Min	Avg			Max	Min	Avg		Max	Min	Avg		
EirGrid	1637	1506	17	652	485	39.8	4757	1996	3304	2458	52.3	0.6	20.7		
SONI	451	387	0	150	111	33.2	1745	634	1128	839	46.2	0.0	14.5		
All-Island	2088	1864	18	802	597	38.4	6473	2648	4446	3308	48.5	0.5	19.1	50.0	11.61%

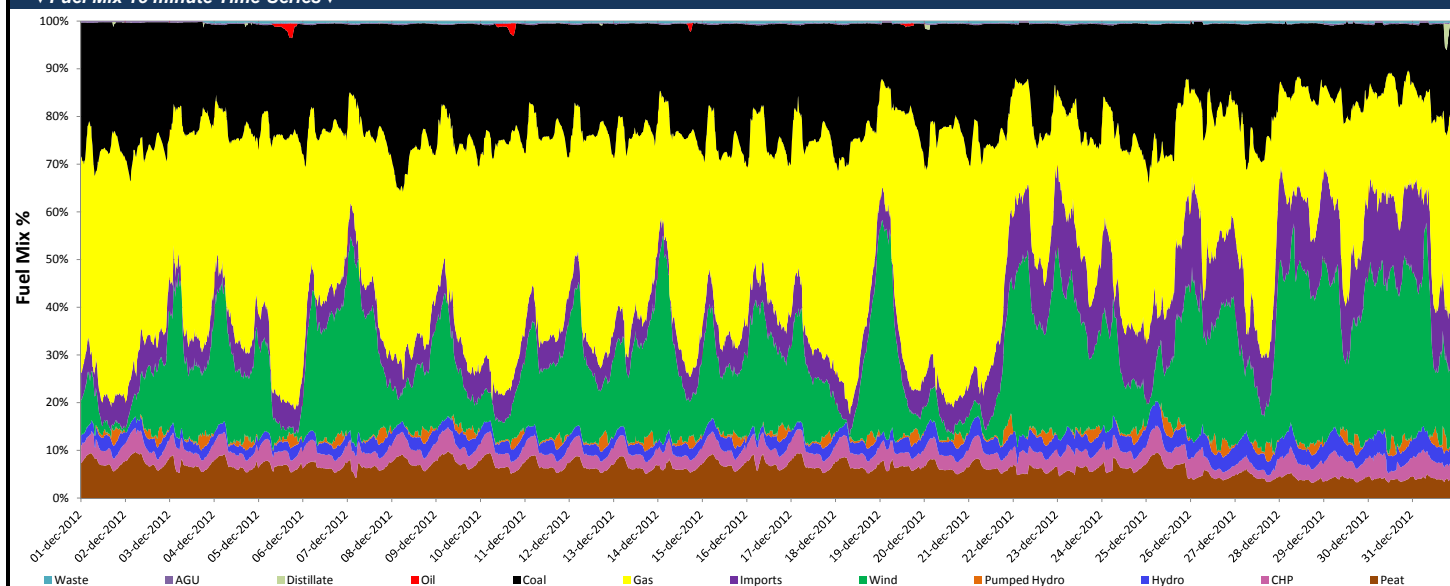
## ▼ All-Island Wind Generation and Forecast Wind ▼



## ▼ Average Daily Wind Penetration ▼



## ▼ Fuel Mix 15 minute Time-Series ▼



## ▼ General Information / Notes ▼

\*Demand Data is based on Export plus Generation House Load

System Data is based on 15-minute SCADA data

Installed Wind MW based on SCADA and Registered data

The maximum wind generation in the different jurisdictions does not necessarily occur at the same time

SNSP - System Non-Synchronous Penetration is the sum of Wind generation and HVDC imports as a percentage of total generation

While every effort has been made in the compilation of this report to ensure that the information herein is correct we cannot accept any responsibility or liability for any damage howsoever caused by reliance on the information presented here.